



Noise Monitoring Result

Day Time (0700 - 1900hrs on normal weekdays)

Location: M1a - Harbour Road Sports Centre

Date	Time	Weather	Measurement Noise Level			Baseline Level	Construction Noise Level	Limit Level
			Leq	L10	L90	Leq	Leq	Leq
Unit: dB(A), (30-min)								
03/10/13	9:45	Fine	74.0	76.5	70.0	72	69	75
08/10/13	10:00	Fine	73.1	75.5	67.0	72	66	75
16/10/13	9:45	Fine	73.6	76.5	68.5	72	68	75
22/10/13	9:30	Fine	73.6	76.0	68.5	72	68	75

Location: M2b - Noon-day gun area

Date	Time	Weather	Measurement Noise Level			Baseline Level	Construction Noise Level	Limit Level
			Leq	L10	L90	Leq	Leq	Leq
Unit: dB(A), (30-min)								
03/10/13	10:25	Fine	69.5	71.0	67.0	68	65	75
08/10/13	10:45	Fine	69.4	70.5	67.5	68	65	75
16/10/13	10:35	Fine	70.0	71.5	67.5	68	66	75
22/10/13	9:25	Fine	71.9	72.0	68.5	68	70	75

Location: M3a - Tung Lo Wan Fire Station

Date	Time	Weather	Measurement Noise Level			Baseline Level	Construction Noise Level	Limit Level
			Leq	L10	L90	Leq	Leq	Leq
Unit: dB(A), (30-min)								
03/10/13	13:00	Fine	66.0	67.5	63.5	69	66	75
08/10/13	11:25	Fine	66.1	67.0	64.5	69	66	75
16/10/13	10:15	Fine	70.0	72.9	65.5	69	64	75
22/10/13	10:00	Fine	66.4	68.0	64.5	69	66	75

Location: M4b - Victoria Centre

Date	Time	Weather	Measurement Noise Level			Baseline Noise Level	Construction Noise Level	Limit Level
			Leq	L10	L90	Leq	Leq	Leq
Unit: dB(A), (30min)								
03/10/13	13:45	Fine	69.1	70.5	67.0	67	64	75
08/10/13	13:00	Fine	68.4	69.5	66.5	67	62	75
16/10/13	13:00	Fine	69.8	71.5	67.0	67	66	75
22/10/13	10:45	Fine	69.5	71.0	67.0	67	65	75

Location: M5b - City Garden

Date	Time	Weather	Measurement Noise Level			Baseline Level	Construction Noise Level	Limit Level
			Leq	L10	L90	Leq	Leq	Leq
Unit: dB(A), (30min)								
03/10/13	14:29	Fine	70.6	71.3	68.5	68	67	75
08/10/13	13:50	Fine	69.9	71.0	67.5	68	65	75
16/10/13	13:44	Fine	74.9	76.5	72.5	68	74	75
22/10/13	11:25	Fine	72.5	74.8	68.0	68	71	75

Location: M6 - HK Baptist Church Henrietta Secondary School

Date	Time	Weather	Measurement Noise Level			Baseline Level	Construction Noise Level	Limit Level
			Leq	L10	L90	Leq	Leq	Leq
Unit: dB(A), (30-min)								
03/10/13	15:17	Fine	73.9	75.0	72.0	71	71	70
08/10/13	14:30	Fine	73.1	74.5	72.0	71	69	70
16/10/13	14:00	Fine	73.7	75.0	72.0	71	71	70
22/10/13	13:00	Fine	73.3	74.5	71.0	71	70	70



Noise Monitoring Result

Day Time (0700 - 1900hrs on normal weekdays)

Location: M7e - International Finance Centre (Eastern End of Podium) (Reference Station)

Date	Time	Weather	Measurement Noise Level			Baseline Level	Construction Noise Level	Limit Level
			Leq	L10	L90	Leq	Leq	Leq
Unit: dB(A), (30-min)								
03/10/13	8:50	Fine	71.7	73.0	69.5	67	70	N/A
07/10/13	9:35	Fine	73.4	74.5	69.0	67	72	N/A
16/10/13	8:50	Fine	75.2	76.5	72.0	67	75	N/A
21/10/13	10:10	Fine	75.1	77.0	70.0	67	74	N/A

Location: M7w - International Finance Centre (Western End of Podium)

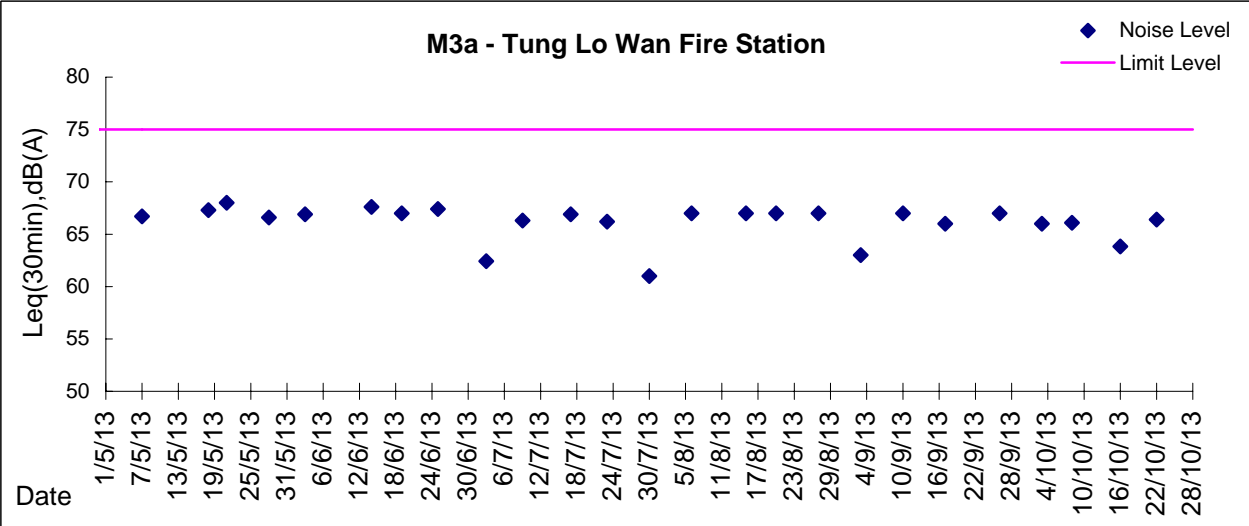
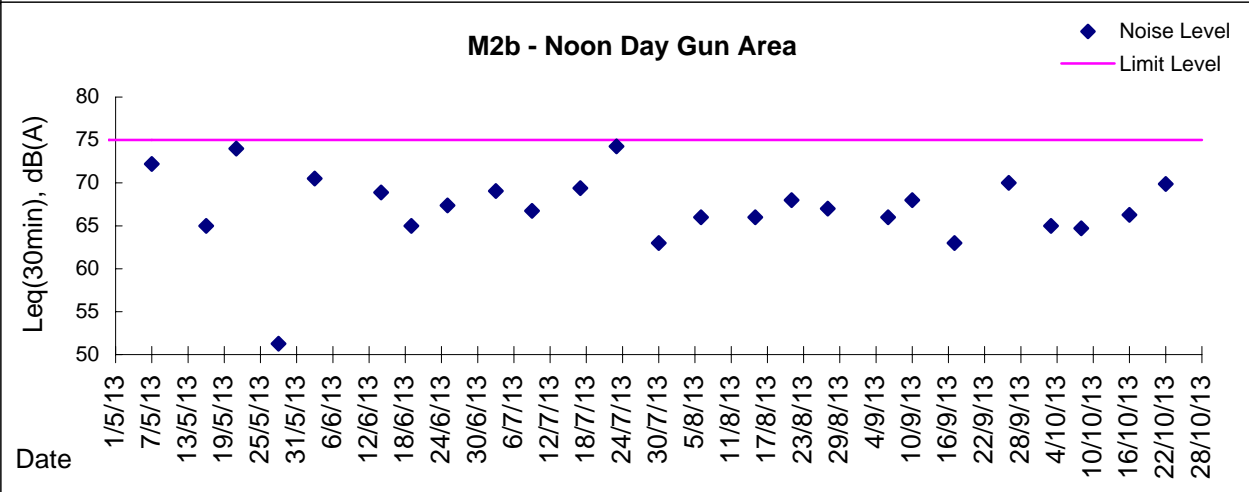
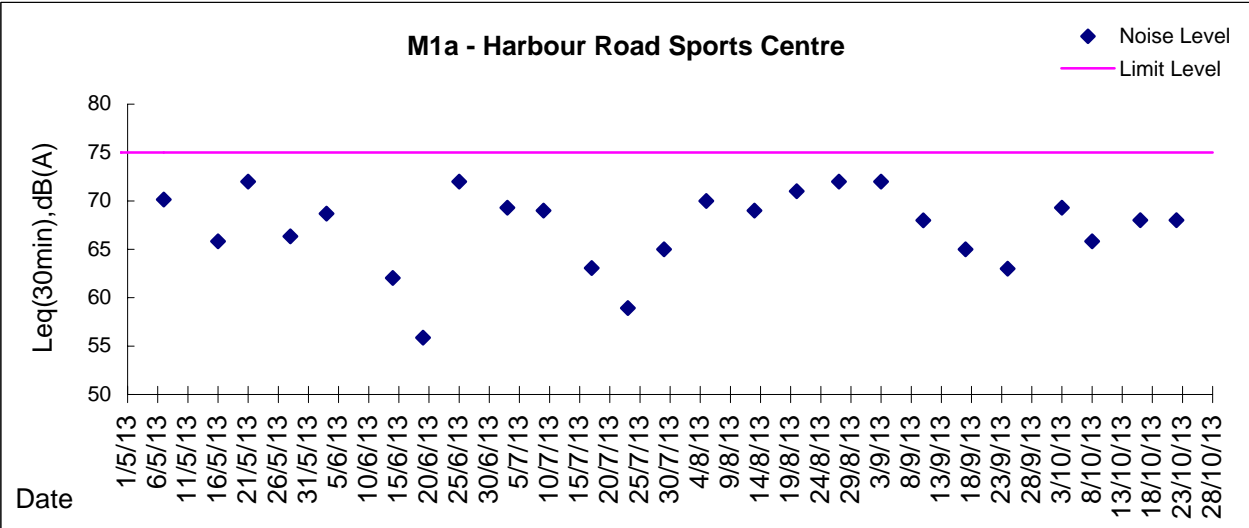
Date	Time	Weather	Measurement Noise Level			Baseline Level	Construction Noise Level	Limit Level
			Leq	L10	L90	Leq	Leq	Leq
Unit: dB(A), (30-min)								
03/10/13	8:15	Fine	67.5	69.0	65.5	69	68	75
07/10/13	10:15	Fine	68.2	70.0	65.0	69	68	75
16/10/13	8:10	Fine	68.6	70.5	65.5	69	69	75
21/10/13	9:30	Fine	70.4	72.0	67.5	69	64	75

Location: M8 - City Hall

Date	Time	Weather	Measurement Noise Level			Baseline Level	Construction Noise Level	Limit Level
			Leq	L10	L90	Leq	Leq	Leq
Unit: dB(A), (30-min)								
02/10/13	16:59	Fine	63.1	64.5	61.0	64	63	70
07/10/13	10:55	Fine	62.5	66.0	57.0	64	63	70
15/10/13	10:00	Fine	60.4	62.5	57.0	64	60	70
21/10/13	10:55	Fine	60.4	62.5	57.5	64	60	70



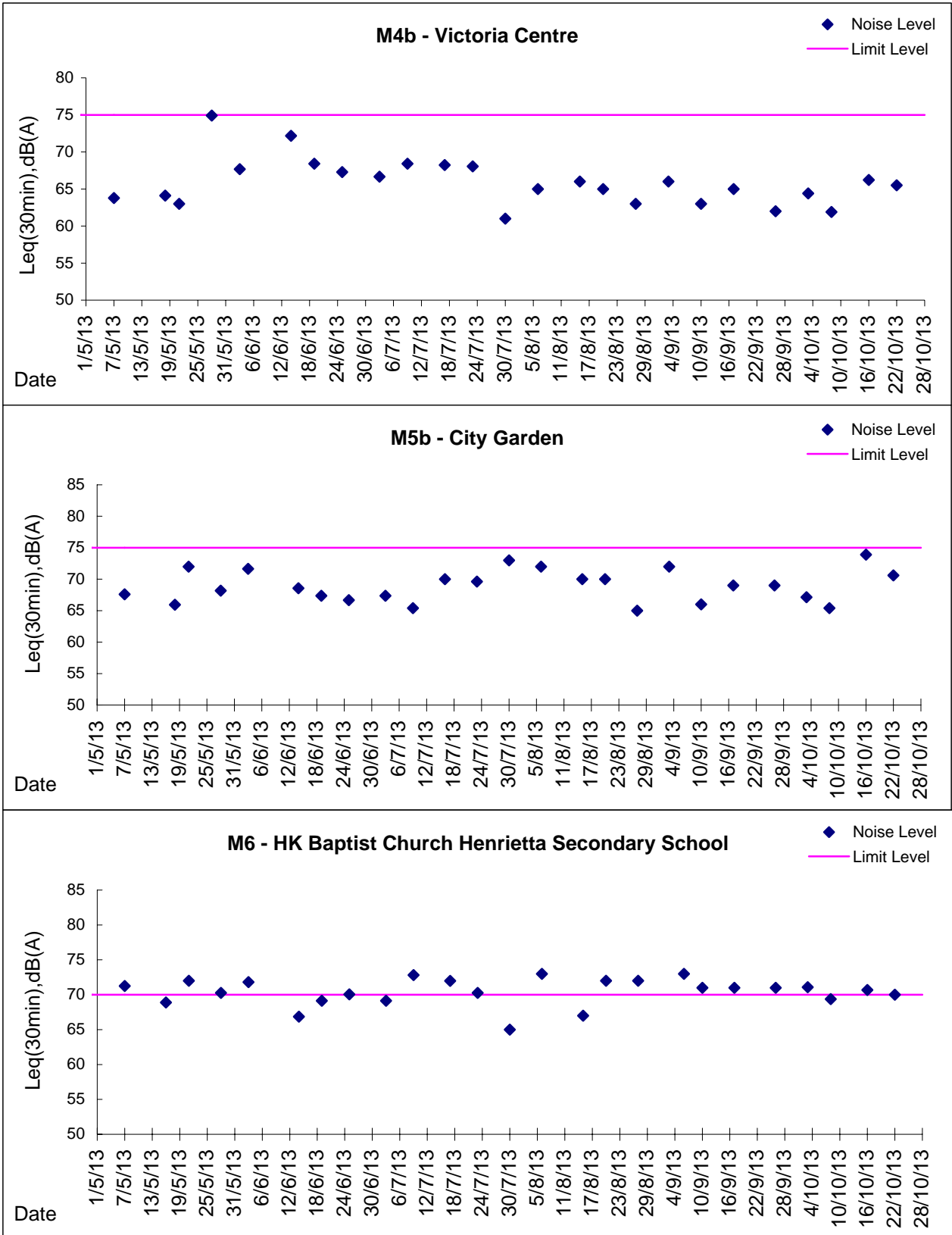
Graphic Presentation of Noise Monitoring Result
Day Time (0700 - 1900hrs on normal weekdays)





Graphic Presentation of Noise Monitoring Result

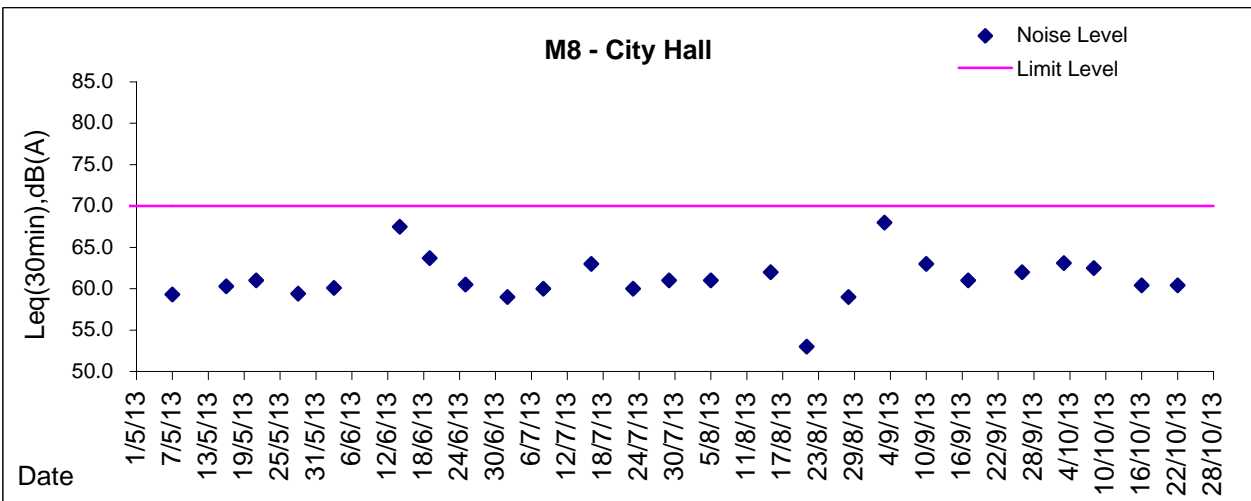
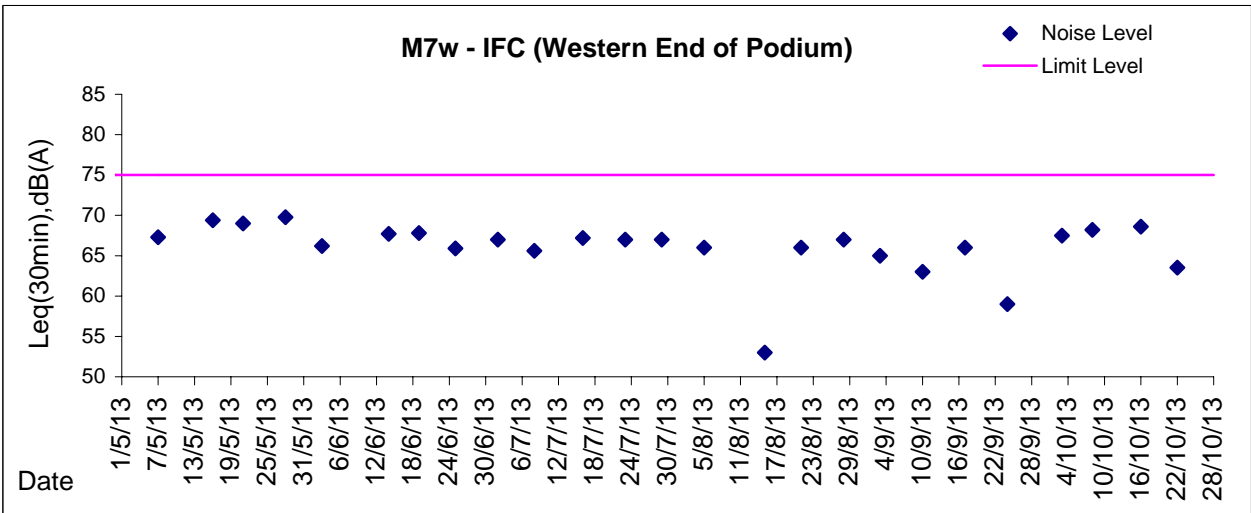
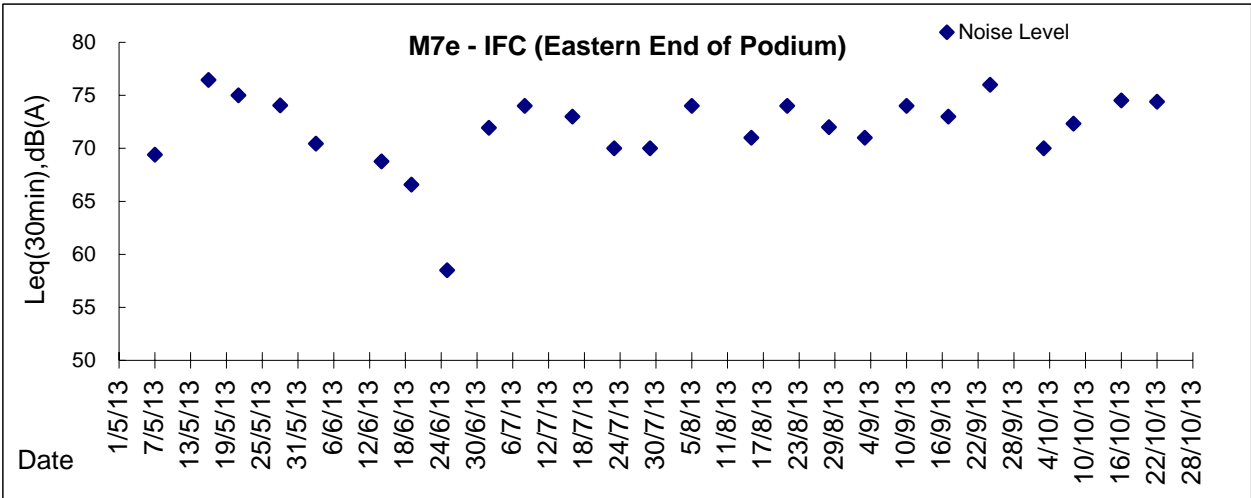
Day Time (0700 - 1900hrs on normal weekdays)





Graphic Presentation of Noise Monitoring Result

Day Time (0700 - 1900hrs on normal weekdays)



* Remark: M7e - IFC (Eastern End of Podium) is a reference monitoring station